

Flicker Test Report

FLICKER CLASSIFICATION (IEEE 1789-2015): Risk
SVM (IEC TR 63158): PASS (Test value: 0.008 +- 0.000, Acceptance limit < 0.9)
Pst LM (IEC TR 61547-1): PASS (Test value: 0.179 +- 0.009, Acceptance Limit < 1.0)
Tolerances are evaluated by 2 x standard deviations (k=2, 95% confidence level).

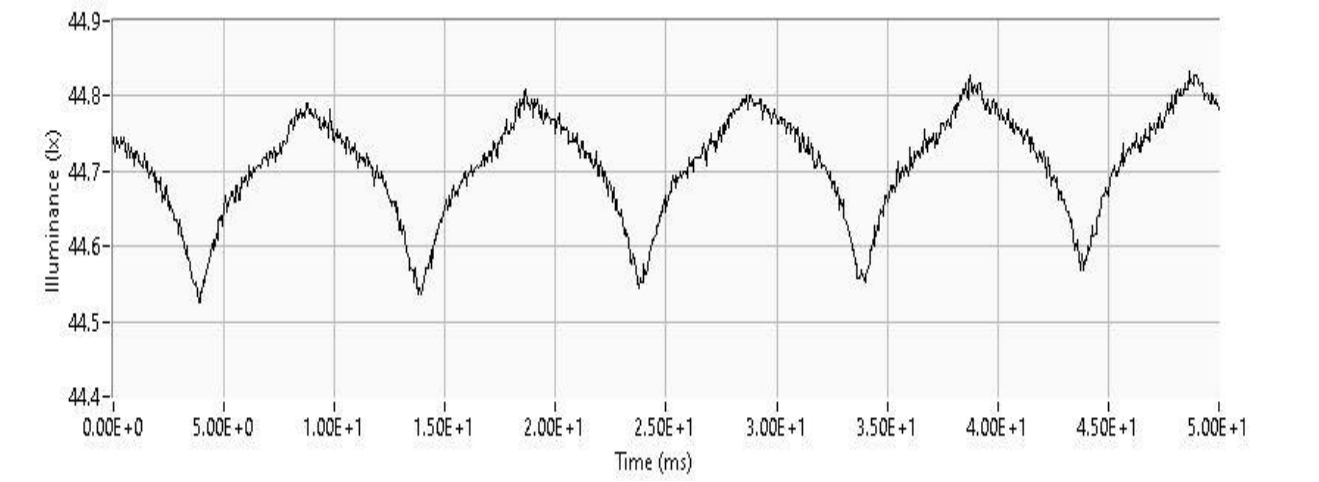
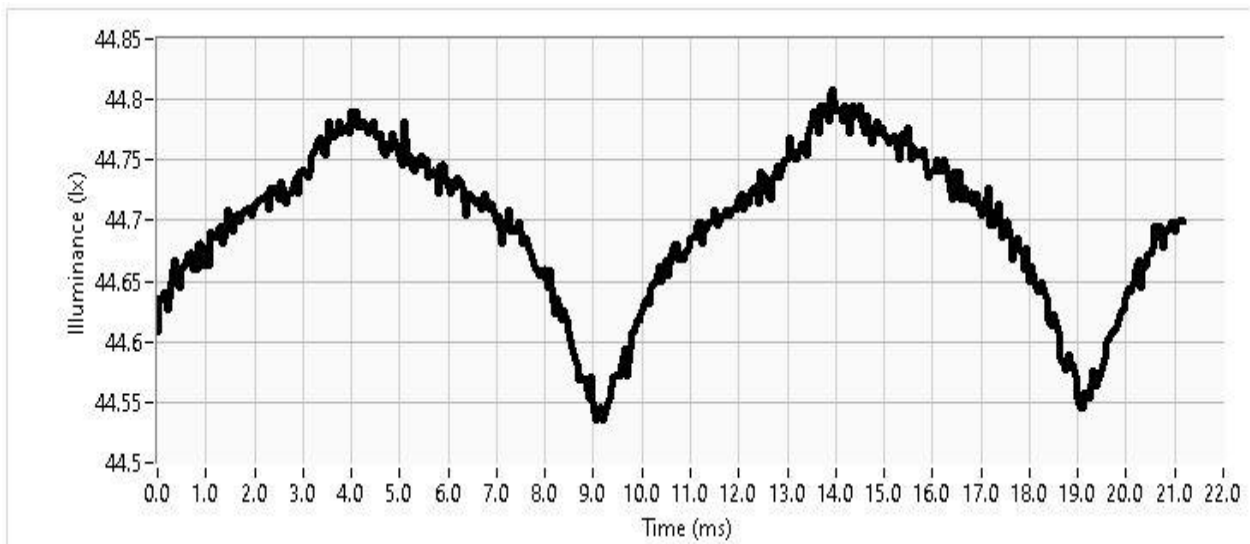


Table. Flicker analysis summary. The values have been calculated as an average of consecutive repetition measurements.

	Value	St.dev.
Average signal	44.68	0.01
Mean signal	44.66	0.02
Max signal	44.88	0.04
Min signal	44.45	0.03
Percent flicker (%)	0.48	0.06
Flicker index	0.0009	0.0006
Flicker frequency (Hz)	0.0	0.0
Pulse width (ms)	Inf	NaN
SVM	0.0080	0.0001
Pst LM	0.1793	0.0044

Figure. Illuminance as a function of time in one period. The graph is calculated for the latest signal period.



Figures below show the data as a function of consecutive measurement repeats.

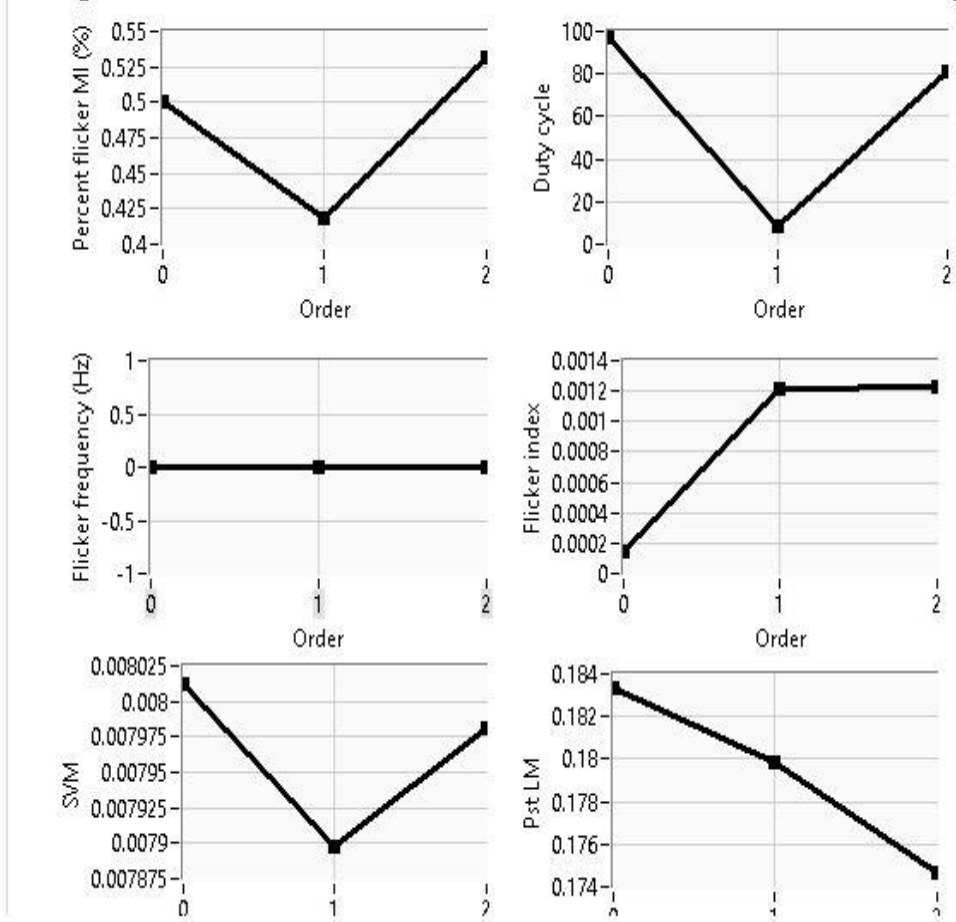


Figure. Modulation index (%) vs. Flicker Frequency according to IEEE 1789.

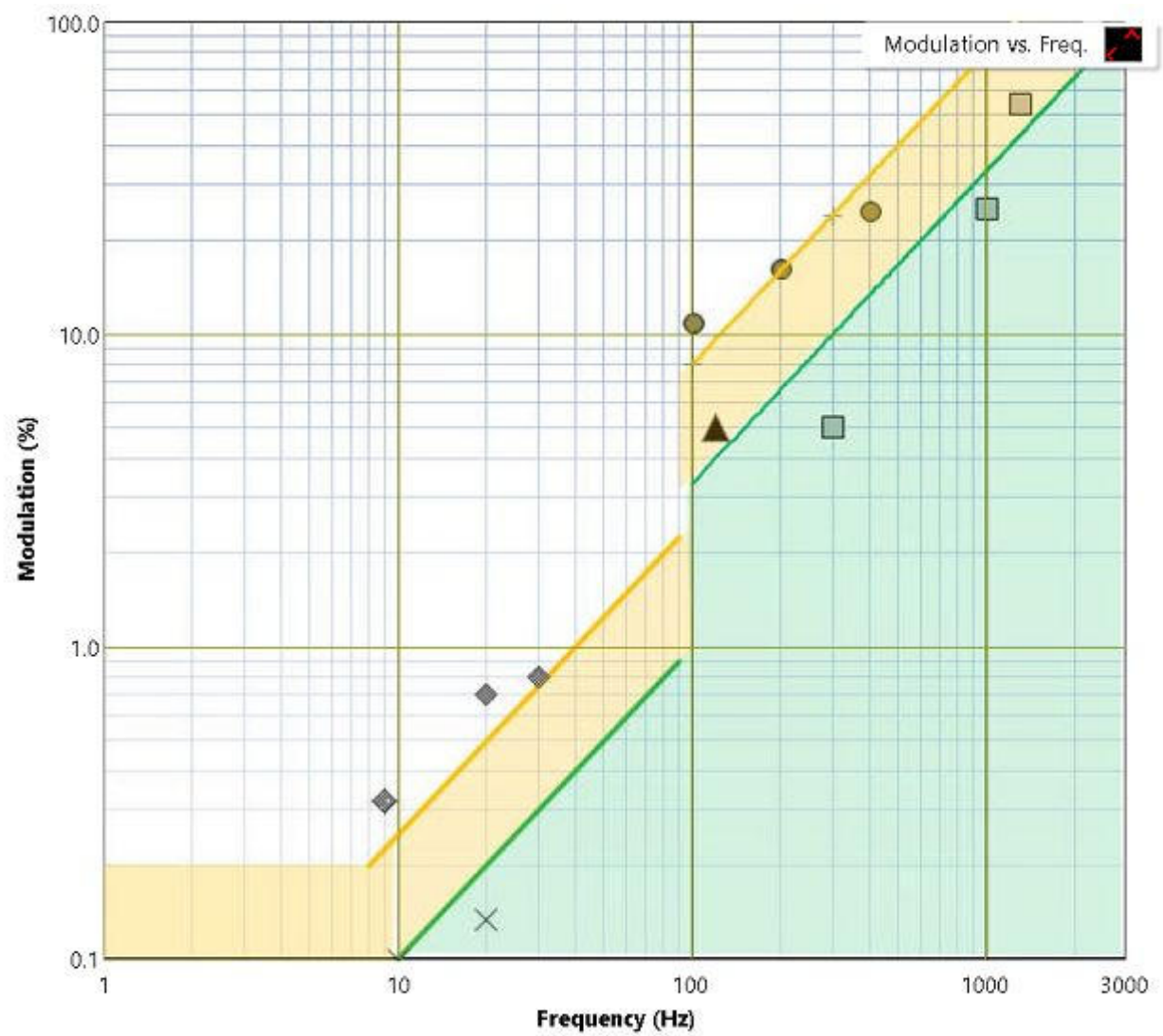


Figure. Pst_LM long signal shape.

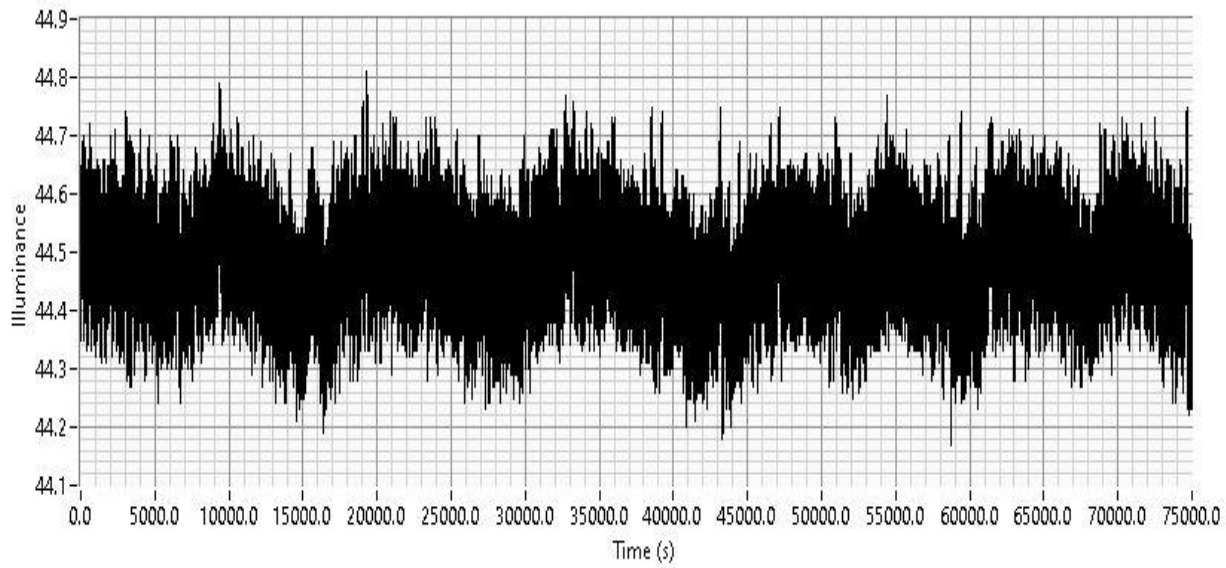


Figure. Fast-Fourier transform for frequency analysis (SVM).

Harmonic order	Frequency (Hz)	Magnitude (%)
0	0	95.0

